

SDI | PRODUCTS

50+ YEARS
DENTISTRY
SCIENCE

50 YEARS OF RESTORATIVE INNOVATION



GLASS IONOMERS



CEMENTS



COMPOSITES



COMPOSITES

STELA

SELF CURE RESTORATIVE

- Self cure flowable composite
- Mitigates polymerization stress for a gap-free interface
- Self cure for unlimited depth of cure
- High bond strength
- Choice of capsule or automix syringe
- High flexural strength
- High compressive strength & high surface hardness



BEFORE
Cavity prepared and ready to be isolated with rubber dam



AFTER
Final aspect after finishing and polishing

Images courtesy of Prof Dr Rocio Lazo



LUNA 2

UNIVERSAL COMPOSITE

High strength and esthetics

- Fantastic handling: non-stick, non-slump, easy to pack and sculpt
- BPA free for health conscious patients
- Vita-shaded with Logical Shade Matching Technology and chameleon effect for easier and consistent shade selection, with great colour stability
- High 250% AI radiopacity that allows clear differentiation with adjacent enamel and dentine, providing easy and precise diagnosis in radiographs



AURA EASY

SIMPLE, BRILLIANT RESTORATIONS, EVERY TIME!

- 4 shades cover 16 VITA® classical A1-D4® shades
- Increased wear resistance and strength
- Smooth high gloss finish every time
- Non-sticky consistency makes it simple to sculpt
- Low volumetric shrinkage to offset marginal stress
- No slumping and holds its shape
- Available in syringes and complets



AURA BULK FILL

UNIVERSAL BULK FILL COMPOSITE

- High compressive & wear strength - no need for capping layer
- 5mm depth of cure
- Excellent esthetics due to novel curing feature & chameleon effect
- Low shrinkage
- Quick & easy to place without sticking or slumping



FLOWABLE COMPOSITES



LUNA FLOW

UNIVERSAL FLOWABLE COMPOSITE

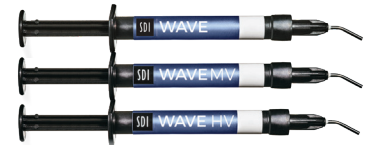
- Exceptionally high compressive strength of 421 MPa and 128 MPa of flexural strength
- Flows on demand, holds its shape and does not string for maximum control over application
- Outstanding radiopacity of 265% AI for faster and more precise diagnosis
- Two viscosity options for all clinical indications: Luna Flow offers medium/high viscosity and Luna Flow LV offers low viscosity



AURA EASYFLOW

UNIVERSAL FLOWABLE COMPOSITE

- 4 shades cover 16 VITA® classical A1-D4® shades
- Optimal flow for cavity adaptation
- High visibility on radiographs
- Strong mechanical properties
- Easy shade matching
- Optimised optical properties
- Stable esthetics over time



WAVE, WAVE MV AND WAVE HV

FLUORIDE RELEASING FLOWABLE COMPOSITE

- High compressive strength
- Three viscosities
- Natural fluorescence
- No after cure shade change



CEMENTS

SUPERIOR BOND, HIGH STRENGTH AND LESS WASTE

Riva Cem Automix is a self-curing, radiopaque, fluoride releasing paste/paste resin modified glass-ionomer luting cement. It is indicated for the permanent cementation of metal and ceramic restorations. The automix tip attachment offers convenience over traditional hand mixed cement systems.

RIVA CEM AUTOMIX

RESIN MODIFIED GLASS IONOMER LUTING CEMENT

- Superior bond, high strength and less waste
- Highest flexural strength
- More tips / less tip waste
- The best long term aesthetics
- Light tack cure option
- Sustained fluoride release
- BPA free
- Shade: light yellow



RIVA LUTING PLUS

SELF CURING RESIN MODIFIED GLASS IONOMER LUTING CEMENT

- Chemically adheres to tooth and substrates
- Bioactive proprietary ionglass™ technology
- High flexural strength - reduced cracking and failure in flexion
- Fluoride releasing and recharging ability
- Radiopaque
- BPA free



RIVA LUTING

SELF CURING CONVENTIONAL GLASS IONOMER LUTING CEMENT

- Chemically adheres to tooth structure and metal substrates
- Very low film thickness - flows easily between restoration and tooth
- High fluoride releasing and recharging ability
- Bioactive proprietary ionglass™ technology
- BPA & HEMA free



SET PP / SET

DUAL CURED, SELF ETCHING, SELF ADHERING RESIN CEMENT

- No Bis-Phenol A or HEMA
- High bond strength
- Easy clean up
- Set PP syringe refills and kits
- Set box of 50 capsules



PREVENTATIVES



RIVA STAR AQUA

TOOTH DESENSITIZING AGENT

- Silver Fluoride [AgF] solution. Same clinical efficacy as SDF.
- Instant desensitizer for immediate relief [2 years+]
- No soft tissue irritation
- Reduced staining with patented formula



RIVA STAR

TOOTH DESENSITIZING AGENT

- Instant desensitizer for immediate relief [2 years+]
- Reduced staining with patented formula



SEALANTS

CONSEAL F

LIGHT CURED FLUORIDE RELEASING RESIN PIT AND FISSURE SEALANT

- No Bis-Phenol A or it's derivatives
- Accurate and controlled delivery with 27 gauge tips
- Extremely low viscosity - quickly and deeply penetrate pits and fissures



RIVA PROTECT

SELF CURING CONVENTIONAL GLASS IONOMER USED AS A SEALANT, LINER AND SURFACE PROTECTOR

- Works in a moist environment - indicated for partially erupted teeth and challenging patients



EQUIPMENT

RADII XPERT

SMARTER DESIGN, OPTIMAL CURE EVERY TIME.

- Optimally collimated beam ideal for bulk-fill materials
- Consistent light intensity and beam profile over clinically relevant distances from 0-10mm
- Heat sink and pulse technology for enhanced heat management
- Unique target assist for precision curing
- Modular design - Full arch bleaching, diagnostic and orthodontic interchangeable attachments available
- 360-degree rotatable head
- Ergonomically well-balanced grip
- Cures all composites - light intensity 1500 mW/cm² over a 4-mm aperture with wavelength range of 440 nm - 480 nm
- Base with intensity indicator
- Lightweight with slimline design



RADII-CAL CX

COLLIMATED LED CURING LIGHT

- Collimated beam: For a deeper, consistent cure.
- Consistent cure energy: Curing output energy remains the same during low battery usage.
- Long life battery: 1,200 x 10 second cures on a full charge.
- Advanced heat sink technology - no fan required
- Built in ramp up mode
- Built in radiometer indicator
- Cordless, lightweight design - 5.1 oz/144 g
- 2-year limited warranty*



*Radii-Cal CX: 2 year manufacturing warranty on parts and battery.

ULTRAMAT X

THE EASIER, QUIETER CAPSULE MIXER

- One hand use: simply clip capsules off and on
- 30% quieter than leading capsule mixers
- Easy to clean
- 5 year warranty



ULTRAMAT 2

HIGH SPEED MULTI-USE TRITURATOR

- 5-year limited warranty
- Low vibration and extremely quiet
- Accurate and consistent trituration
- Safe and simple to use
- Easy to clean
- Dual voltage



RADIOMETER X

MONITOR FOR CURING LIGHT INTEGRITY

- Measures the crucial light intensity between the 380-550 nm wavelength range
- Immediate digital reading



AMALGAMS



GS-80

ECONOMICAL NON-GAMMA 2 ADMIX ALLOY

- High early compressive strength
- Great corrosion resistance
- Excellent marginal sealing
- Optimal handling characteristics
- Dimensional stability
- Over 400 Million restorations worldwide



PERMITE

HIGH SILVER NON-GAMMA 2 ADMIX ALLOY

- Superior handling characteristics
- Void-free restorations with no marginal leakage
- Extremely high resistance to corrosion
- Mechanical and chemical stability
- High strength and hardness for extreme wear resistance
- Outstanding Market performance for over forty years



LOJIC+

PLATINUM MODIFIED, HIGH SILVER, HIGH STRENGTH, SPHERICAL AMALGAM

- Creamy consistency, soft packing and smooth carving.
- Very high compressive strength
- Superior marginal adaptation.
- Easy to polish to a mirror finish
- Endurable, corrosion resistant amalgam
- 300 Million restorations worldwide

ADHESIVES

ZIPBOND UNIVERSAL

UNIVERSAL ADHESIVE

- Consistent bond strengths to dentin and enamel
- Including MDP
- Wet and dry dentin bonding
- Predictable bond strengths to indirect substrates
- Fluoride releasing



STAE

DENTIN/ENAMEL SINGLE COMPONENT ADHESIVE

- High bond strength
- No BPA or its derivatives
- Easy to use – bonds to moist and dry tooth surfaces



RIVA BOND LC

LIGHT CURED ADHESIVE FOR DIRECT RESTORATION

- Unique Stress Reduction Technology™
- Compensates and absorbs composite shrinkage stress



ACCESSORIES

RIVA CONDITIONER

POLYACRYLIC ACID CONDITIONER

- Partially removes the smear layer
- Optimizes adhesion of the GIC
- 26% polyacrylic acid
- 10mL bottle



RIVA COAT

LIGHT CURED COATING MATERIAL FOR GLASS IONOMER AND RESIN PRODUCTS

- Prevents saliva and water contamination to exposed surfaces of glass ionomer cements during the first 24 hours immediately after placement
- 5mL bottle



SUPER ETCH

37% PHOSPHORIC ACID GEL ETCH

- Washes away easily with water
- No interference with adhesive
- Blue tint for easy placement visibility
- Thixotropic gel to improve handling



POINTS & DISPENSER

DISPOSABLE BRUSH APPLICATORS

- Solvent resistant, non-absorbent, non-linting fibers
- Boxes of 400 in medium, fine and superfine

Dispenser:

- Simple turn dispensing
- Economically priced



TOOTH WHITENING

POLA DAY

HYDROGEN PEROXIDE BASED ADVANCED TRAY TOOTH WHITENING SYSTEM

- Available in **7.5%** and **9.5% hydrogen peroxide**
- High water content
- Fast acting: 30 minutes a day
- High viscosity, neutral pH gel contains Potassium Nitrate to maximize patient comfort



POLA NIGHT

CARBAMIDE PEROXIDE BASED ADVANCED TRAY TOOTH WHITENING SYSTEM

- Available in **10%, 16%** and **22% carbamide peroxide**
- From 45 minutes to overnight wear
- High viscosity, neutral pH gel contains Potassium Nitrate to maximize patient comfort



POLA DAY CP

SUPER FAST TRAY TOOTH WHITENING SYSTEM

- Available in **35% carbamide peroxide**
- Super fast: Just 15 minutes a day
- High viscosity, neutral pH gel contains Potassium Nitrate to maximize patient comfort



POLA FOR ALIGNERS

STRAIGHTEN AND BRIGHTEN TOGETHER

- Available in **10% carbamide peroxide**
- The greatest patient comfort in a whitening kit
- Contains potassium nitrate and fluoride to reduce sensitivity for long term use



POLA RAPID

IN-OFFICE TOOTH WHITENING SYSTEM: SUPER. FAST. WHITENING.

- Available in **38% hydrogen peroxide**
- Fast and simple: from 3 x 8 minute applications
- Non-stick gel for faster application and removal
- Enhanced blue colour for superior visibility



POLA LIGHT

TOOTH WHITENING SYSTEM!

- Available in Pola Day **9.5% hydrogen peroxide** and Pola Night **22% carbamide peroxide**
- From just 20 minutes a day
- Portable, re-chargeable and easy to wear

POLA LUMINATE

BRUSH ON & GO!

- Available in **6% hydrogen peroxide**, low viscosity fast drying gel
- No trays required - quick and easy professional brush on tooth whitener



GLASS IONOMERS



THE MULTI AWARDED EASY HANDLING GLASS IONOMER

Riva Light Cure HV contains **ionglass™** filler, made of a unique blend of different sizes of ultrafine highly reactive glass particles.

The **ionglass™** filler contains fluoride and strontium ions which synergistically enhance tooth bioremineralization.

[Source: Thuy et al. Arch Oral Biol. 2008 Nov; 53(11):1017-22]

RIVA LIGHT CURE

LIGHT CURED, RESIN REINFORCED GLASS IONOMER RESTORATIVE MATERIAL

- Exceptional low viscosity handling
- Contains SDI's proprietary ionglass™, a high ion releasing, radiopaque, bioactive glass that remineralizes and prevents secondary caries formation
- Unique, patented, orange light safe tip, prevents curing in the tip and significantly extends working time

RIVA LIGHT CURE HV

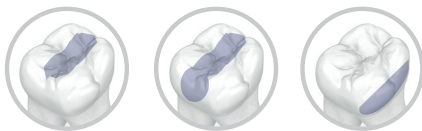
HIGH VISCOSITY LIGHT CURED, RESIN REINFORCED GLASS IONOMER RESTORATIVE MATERIAL

- Exceptional high viscosity handling
- Contains SDI's proprietary ionglass™, a high ion releasing, radiopaque, bioactive glass that remineralizes and prevents secondary caries formation
- Unique, patented, orange light safe tip, prevents curing in the tip and significantly extends working time
- High Viscosity formulation is flowable enough to inject and highly sculptable and packable



RIVA LIGHT CURE HV

A HYBRID RESTORATIVE WITH MORE INDICATIONS



CLASS I

CLASS II
(conservative)

CLASS V



RIVA SELF CURE

SELF-CURING, TOOTH REMINERALIZING GLASS HYBRID BULK FILL RESTORATIVE MATERIAL

- Contains SDI's proprietary ionglass™, a high ion releasing, radiopaque, bioactive glass that remineralizes and prevents secondary caries formation
- Very high fluoride releasing and recharging ability
- Strong dentin replacement



RIVA SELF CURE HV

HIGH VISCOSITY, SELF-CURING, TOOTH REMINERALIZING GLASS HYBRID BULK FILL RESTORATIVE MATERIAL

- Contains SDI's proprietary ionglass™, a high ion releasing, radiopaque, bioactive glass that remineralizes and prevents secondary caries formation
- High Viscosity formulation is flowable enough to inject and highly sculptable and packable
- Strong dentin replacement



RIVA SILVER

MERCURY FREE SELF-CURING GLASS IONOMER RESTORATIVE MATERIAL

- Silver reinforced
- Ideal for abfraction lesion restorations
- Ideal for bulk filling
- High fluoride releasing and recharging ability



RIVA APPLICATOR PRO

CAPSULE APPLICATOR

- Compatible with SDI and other market leading glass ionomer capsules
- Contoured design for strength and comfort
- Engineered stainless steel mechanical parts and durable mechanical casing
- No lubrication required



NEW

COMPLIMENTARY MARKETING MATERIAL

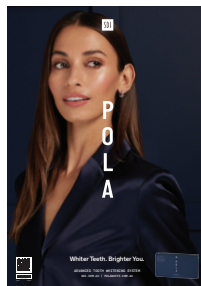
Marketing materials to assist in promoting whitening to patients.



Poster Pola Day
Reorder M110050



Poster Pola Night
Reorder M110051



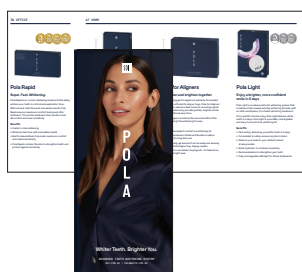
Poster Pola Rapid
Reorder M110092



Poster Pola Collection
Reorder M110072



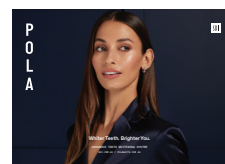
Pola Patient Handout Stand
Reorder M110059



Pola Patient Handout
Reorder M110086



Pola Before & After Stand
Reorder M110057



Pola Menu A5
Reorder M110093



Pola Thank You Card
Reorder M110063



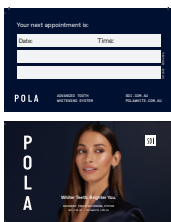
Pola Statement Stuffer
Reorder M110060



Pola Light Patient Handout
Reorder M110090



Pola Carry Bags (two sizes)
Large Reorder M100332
Small Reorder M100331



Pola Appointment Card
Reorder M110056



Pola Window Sticker
Reorder M110058



Pola Waiting Room
USB Video
Reorder M100245



Customizable Marketing Material
More customizable marketing
material is available via download.
Visit www.sdi.com.au

VISIT WWW.SDI.COM.AU

04-2025

MX00012 S



+D036MX000121H



YOUR SMILE. OUR VISION.

AUSTRALIA 1800 337 003
AUSTRIA 00800 0225 5734
BRAZIL 0800 770 1735
FRANCE 00800 0225 5734
GERMANY 0800 100 5759

ITALY 00800 0225 5734
NEW ZEALAND 0800 808 855
SPAIN 00800 0225 5734
UNITED KINGDOM 00800 0225 5734
USA & CANADA 1 800 228 5166